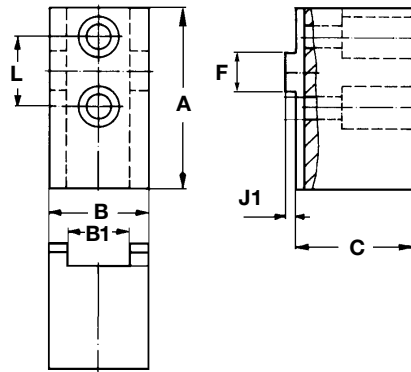


Weiche Aufsatzbacken FWBS mit Sonderabmessungen



für
Handspannfutter F+ / F
und
Kraftspannfutter
FNC, KTNCV, KTNC

Werkstoff: Einsatzstahl, ungehärtet



FORKARDT Futtertyp	Typ	Nenngrößen			Ident-Nr.	B1H11	F _{h6}	J1	L	Gewicht kg/Stück	Berg	Röhm	SMW
		A	B	C									
F+ 160, F 160 FNC 175 KTNCV 175 KTNC 160	FWBS	85	20	70	D1019484006	8	18	4	32	0,79	KHNC 160 KHNC 185	DURO 160 DURO-NC 160 DURO-NC 175 DURO-NCE 160	HG 160, HG-F 160 KNCS-HGN 160 KNCS-N 170 KNSP 160
			30	51	D1070800001					0,87			
F+ 200, F 200 FNC 200 KTNCV 200 KTNC 200	FWBS	100	22	51	D1070801001	10	20	4	40	0,74	KHNC 200	DURO 200 DURO-NC 200 DURO-NCE 200 DURO-NC 225	HG 200 KNCS 200, HG-F 210 KNCS-N 200, HG-N 210 KNCS-A 200 KNSP 200
			30	D1070801002	0,97								
F+ 200, F 200 FNC 200 KTNCV 200 KTNC 200	FWBS	105	22	43	D1070801003	10	20	4	40	0,70	KHNC 200	DURO 200 DURO-NC 200 DURO-NCE 200 DURO-NC 225	HG 200 KNCS 200, HG-F 210 KNCS-N 200, HG-N 210 KNCS-A 200 KNSP 200
				80	D1019485008					1,23			
F+ 250, F 250 FNC 250 FNC 315 KTNCV 250 KTNCV 315 KTNC 250 KTNC 315 KTNCV 270	FWBS	90	40		D1070802001	12	20	5	40	1,30	KHNC 250 KHNC 315	DURO 250 DURO-NC 250 DURO-NCE 250 DURO-NC 315	KNCS-N 250 HG 250 - 315 KNCS 260 - 315 KNCS-A 250 - 315 HG-N 260 - 315 HG-F 260 KNCS-N 260 - 315
			60	55	D170802002					2,07			
			80		D1070802003					2,83			
F+ 250, F 250 FNC 250 FNC 315 KTNCV 270 KTNCV 250 KTNCV 315 KTNC 250 KTNC 315	FWBS	125	30	50	D1070802004	12	20	5	40	1,07	KHNC 250 KHNC 315	DURO 250 DURO-NC 250 DURO-NCE 250 DURO-NC 315	KNCS-N 250 HG 250 - 315 KNCS 260 - 315 KNCS-A 250 - 315 HG-N 260 - 315 HG-F 260 KNCS-N 260 - 315
			32	90	D1019486008					2,25			
			55		D1070802005					1,93			
			75		D1070802006					2,50			
			95		D1070802007					3,20			
			115		D1070802008					3,83			
F+ 315, F 315 FNC 400 KTNCV 400 KTNC 360 KTNC 400	FWBS	110	40		D1070803001	12	26	6	54	1,63	KHNC 400	DURO 315 DURO-NC 315 DURO-NCE 400	HG 400, HG-F 400 KNCS-N 400 KNCS 400 KNCS-A 400 HG-F 315 HGN 400
			60	54	D1070803002					2,53			
			80		D1070803003					3,43			
			74		D1070803004					4,70			
F+ 315, F 315 FNC 400 KTNCV 400 KTNC 360 KTNC 400	FWBS	145	36	100	D1019487009	12	26	6	54	3,60	KHNC 400	DURO 315 DURO-NC 315 DURO-NCE 400	HG 400, HG-F 400 KNCS-N 400 KNCS 400 KNCS-A 400 HG-F 315 HGN 400
			54		D1070803005					2,23			
			94		D1070803006					3,70			
			114		D1070803007					4,50			
			144		D1070803008					5,63			
			50	74	D1070803009					3,87			
F+ 400, F 400 F+ 500, F 500-L FNC 500 KTNCV 500 KTNCV 630 KTNC 500 KTNC 630	FWBS	130	60		D1070804001	18	30	7	60	4,00	KHNC 500	DURO 400 DURO-NC 400 DURO 500 DURO-NC 500 DURO-NCE 500	KNCS-N 500 - 630 KNCS 500 - 630 KNCS-A 500 HG 500 - 630 HG-N 500 - 630 HG-F 400 - 500
			80	73	D1070804002					5,40			
F+ 400, F 400 F 500, F 500-L FNC 500 KTNCV 500 KTNCV 630 KTNC 500 KTNC 630	FWBS	155	50	173	D1070804003	18	30	7	60	9,13	KHNC 500	DURO 400 DURO-NC 400 DURO 500 DURO-NC 500 DURO-NCE 500	KNCS-N 500 - 630 KNCS 500 - 630 KNCS-A 500 HG 500 - 630 HG-N 500 - 630 HG-F 400 - 500
			58	113	D1070804004					6,07			
			60	93	D1070804005					5,00			
F+ 400, F 400 F 500, F 500-L FNC 500 KTNCV 500 KTNCV 630 KTNC 500 KTNC 630	FWBS	180	60	73	D1070804006	18	30	7	60	5,57	KHNC 500	DURO 400 DURO-NC 400 DURO 500 DURO-NC 500 DURO-NCE 500	KNCS-N 500 - 630 KNCS 500 - 630 KNCS-A 500 HG 500 - 630 HG-N 500 - 630 HG-F 400 - 500

Bestellbeispiel: Aufsatzbacke FWBS 125-40-55-F 250 Ident-Nr. D1070802005