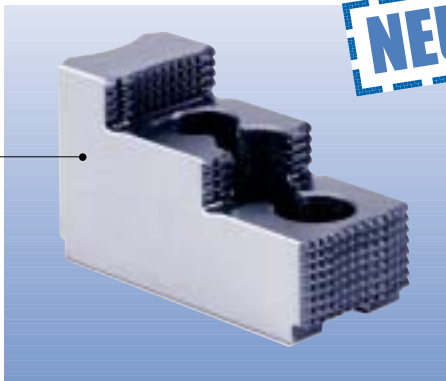
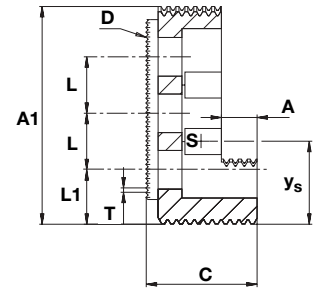
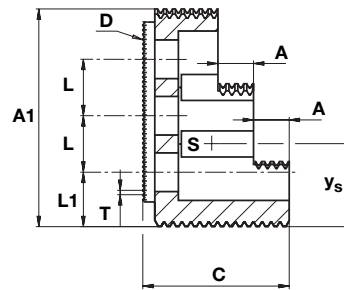
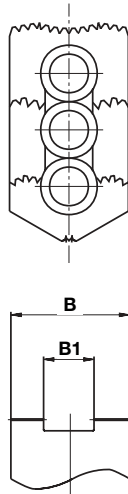


Harte Aufsatzbacken HBMS

Werkstoff: Einsatzstahl, gehärtet
 Backenanschluß: 1,5 mm x 60°; 3 mm x 60°



NEU



HB 23/140

FORKARDT Futtertyp	Typ	Nenngrößen				Ident- Nr.	B1	L	A	T	Gewicht kg/Stück	Röhm	Kitagawa	Matsumoto	Howa
		A1	B	C	D										
QLK 110	HBMS10	47	26	31	MS10	D168886000	10	-	5,5	1,5	0,13		B204 B205	H4-21	
QLK 140 QLC 160 QLC 175 QLK 160 QLK 175 QLC-KS 200 QLK-KS 200	HBMS12	56	32	39	MS12	D166190000	12	-	6,5	1,5	0,23	KFD HE 170	B206, N6 B06, NT6 BT06, BT206 HOH06, HOH206		HO7MA6 HO1MA6 HO15M6 HO22M6
QLC 200 QLK 200 QLC-KS 250 QLK-KS 250	HBMS14	86	35	50	MS14	D166191000	14	25	11	1,5	0,50	KFD HE 210	B-208, B-08, HOH-08, N-08 HJA 6-8, HO-8 HOB-8, HOS-8 AS 08	H-8, HA 6-8 HH-8, HX-8 STC-8, HA 8-8	HO7MA6 HO15M8 HO23M8
QLC 250 QLK 250 QLC-KS 315 QLK-KS 315	HBMS16	99	40	60	MS16	D166192000	16	30	15	1,5	1,00	KFD HE 254	B-210, B10 HOH-10, N-10 HJA 6-10, HOB-10 HJA 8-10, HOS-10 HO-10, AS 10	H-10, HA8-10 HHL-10 HX-10 STC-10 HA8-11	HO22M8 HO7MA10 HO15M10 HO23M10
QLC 315 QLC 400 QLK 315 QLK 400 QLC-KS 400 QLK-KS 400	HBMS21	98	50	60	MS21	D166193000	21	30	22	1,5	1,20	KFN 350 KFE 350 KFM 350 KFG 350	B 212 BT 212		HO27M12
	HBMS22	140	64	89	MS22	D166194000	22	43	22	1,5	1,50		B15 HOB15		